



\*\*\*\*\* **Review July 2010**

**General**

	22 Jun '10	24 May '10	Three month rolling	12 month rolling
Yield / Cow / Day	28.2	29.3	29.0	26.7
305 Day Yield : Cow	9630	9581	9576	9585
305 Day Yield : Heifer	7762	7749	7720	7915
Average No. Days-in-Milk	207	199	199	195
Butterfat (%)	3.61	3.65	3.62	3.61
Protein (%)	3.24	3.12	3.24	3.23
SCC	199	155	184	189

**Fertility**

		14 May '10	03 Apr '10	03 Jan '10	02 Jul '09
Calving Index (Projected)	Mean	396	396	399	406
	Median	376	375	377	386
100d in Calf Rate		0.43	0.42	0.38	0.35
200d in Calf Rate		0.73	0.69	0.68	0.72
No. Serves per Conception (Mean)		2.6	2.5	2.6	2.8

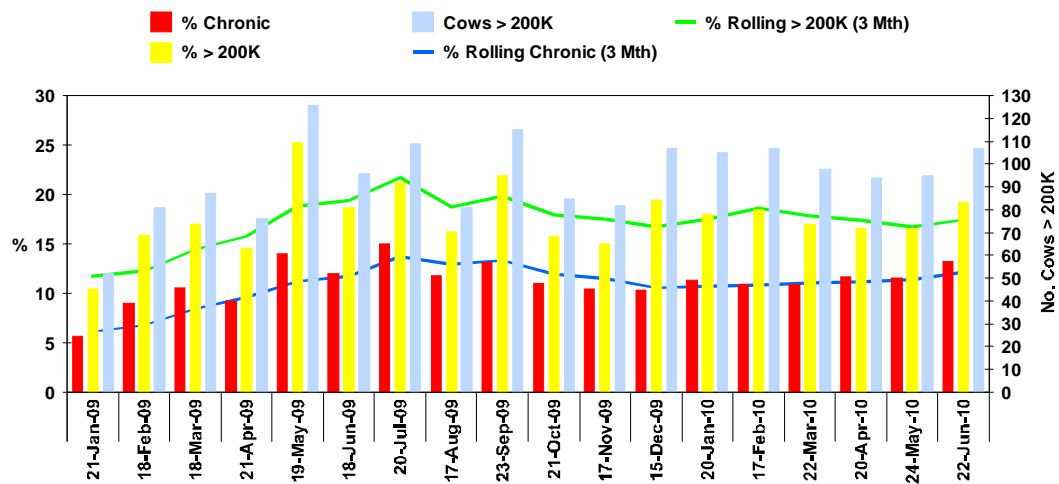
		This Qtr	Last Qtr	Last 12mths	This Qtr Last Year
No. Days	Mean	64	65	63	66
Calving>1st Service	Median	60	62	58	58
No. Days	Mean	118	111	109	127
Calving>Conception	Median	115	91	87	108
24 day 1st serve Submission rate (%)		46.8	50.3	66.4	52.3
Return to Serve (18-24 day rate) (%)		46.0	59.1	64.4	58.4

**Mastitis and SCC**

**Summary**

Herd Status (NTI)	
NTI (Lactation)	1.40
NTI (Dry)	0.83
<b>DETERIORATING</b>	

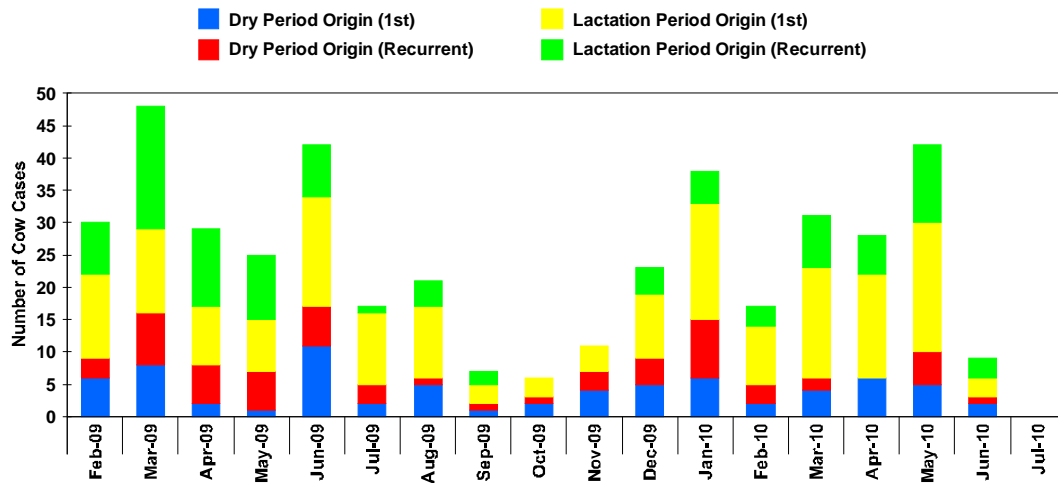
## Chronic SCC Outcome



## Clinical Mastitis

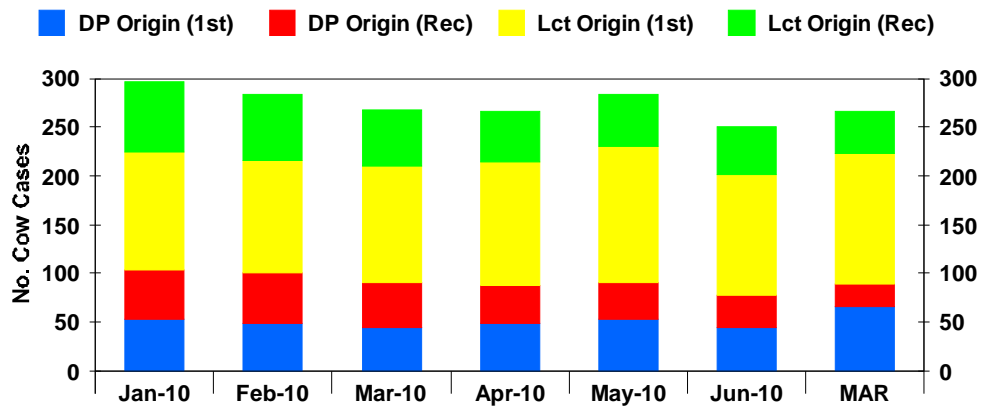
	Last Month	This Mth Last Yr	Last Qrt
Cases/100 cows/year	31	50	61
Proportion of cows affected	2.4	0.5	2.7
Apparent Dry Rate (cows/12)	0.70	3.19	1.53
Apparent Lact. Rate (cows/12)	0.15	0.00	0.33

## Clinical Case Origins



## Rolling 12mth Clinical Case Origins

Rolling 12-Month Origin Analysis (Cow Case)



## Clinical Cure Rates

	Feb-10	Mar-10	Apr-10	May-10
All Mastitis Cure Rate (%)	41	41	42	37
Clinical 1st Case Cure Rate (%)	47	47	46	42
Sub-Clinical Mastitis Cure Rate (%)	0	0	0	0
Dry Period Cure Rate (%)	73	73	72	71

## Nutrition

### Subclinical Ketosis

